

Weblearning LMS

<http://weblearning.atrixware.com/>

The screenshot shows the Atrixware Weblearning LMS control panel. The browser address bar displays "dev.weblearningcenter.net/lms/_library/tab_main.php". The page title is "Atrixware Weblearning LMS". The user is logged in as "anthony" and can "Sign out" or access "HELP". The main navigation menu includes "Home", "Courses", "Learning Modules", "Slides", "Files", "Users", "Reports", and "Account".

The main content area is organized into three sections:

- Administration & Reporting:** Includes icons for Users, Reports, Plugins, and Account.
- Content Authoring & Design:** Includes icons for Courses, Modules, Slides, and Files.
- Training & Support:** Includes icons for Help Center, User Guide, Video Training, Ask a Question, and Submit Ticket.

On the right side, there are three widget areas:

- Articles:** Lists articles such as "Weblearning 9.63 New Features", "The Apple Effect on E-Learning", "10 Tips for Getting Started in E-Learning", and "The Burning E-Learning Question: Does Slide Count Matter?".
- Tutorials:** Features a "Quick Start Tutorial" for Atrixware Weblearning 9.63 LMS.
- Recent Questions:** Lists questions like "Q&A:Name Change", "Q&A:Mass Student Enrollment", and "Q&A:Name Change".

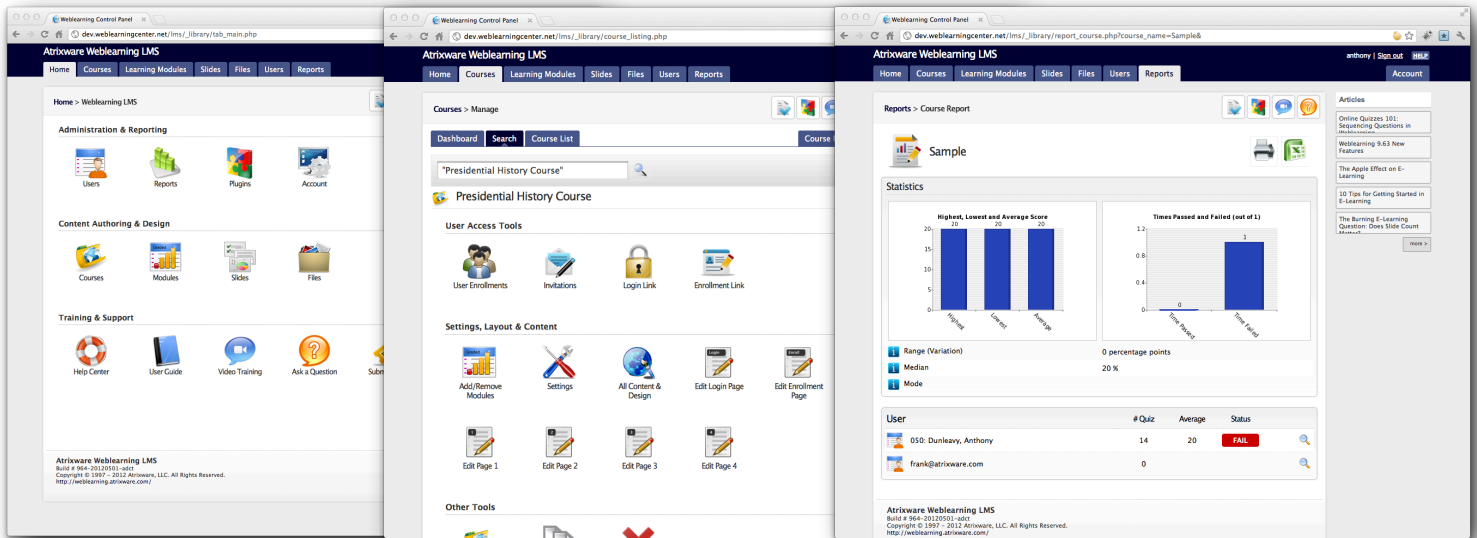
At the bottom left, the footer contains: "Atrixware Weblearning LMS", "Build # 964-20120501-adct", "Copyright © 1997 - 2012 Atrixware, LLC. All Rights Reserved.", and "http://weblearning.atrixware.com/".

THE EASIEST, MOST AFFORDABLE WAY TO ONLINE TESTING & TRAINING.



Equipped with a comprehensive set of features that redefines scalability, flexibility and innovation; **priced at a cost that is truly affordable** – the Atrixware Weblearning LMS is the **best value LMS on the market** for quickly and easily getting your training and testing content online.

It is a system that has been uniquely designed to be **easy to use** for non-technical people, **fit into your budget**, and able to **scale to meet your specific requirements** - from simple online testing and training, to the most detailed requirements to meet federal and state regulations for online courseware.



TOP 10 BENEFITS

- ★ Easy to Use & Affordable
- ★ Robust and Reliable
- ★ Courses are Viewable on Mobile Devices
- ★ Built-in Quiz, Presentation and Course Authoring
- ★ Customizable Completion Certificates
- ★ Comprehensive Email Invitation System
- ★ Comprehensive Reporting with Excel Export
- ★ Supports Videos, Audio, Documents and More
- ★ Option to Accept SCORM Content
- ★ Expandable via Unique Plug-in Architecture



BUILT-IN AUTHORING

Weblearning is a complete LCMS (meaning, you can author content). The authoring interface is designed to work similar to Microsoft Word, so it will feel familiar. Also, all content authored is fully HTML5, so it will be viewable on mobile devices like iPads, Android tablets, and smartphones!



COMPREHENSIVE REPORTING

Weblearning comes with a comprehensive reporting package which spans across activity logs, scores and summaries, and even drills down to question and answer analysis. Most reports can be filtered to include just the data you want, and in addition, just about every report is exportable to Excel.



EXPANDABLE WITH PLUG-IN APPS

Weblearning comes with a solid set of features already. However, you can also purchase plug-in apps designed just for Weblearning (or, write your own using the API). Using this unique architecture, adding functionality, customizing features, or meeting specific regulations is achievable without modifying core system files.



ALL KINDS OF CONTENT

Weblearning enables you to both create content (like interactive quizzes and learning exercises), and host existing content (like office documents, pdf's, videos, powerpoint files, audio files, and even SCORM modules).



WORKS ON DESKTOP & MOBILE DEVICES

Weblearning is built from the ground up to enable you to offer content that does not require Adobe Flash. What this means is, your courses will work on both desktop as well as mobile browsers!



REPORTING

Weblearning gives you access to reports that span across multiple data points. Complete information on time spent, scores achieved, and even choices picked and answers given are all available.



CERTIFICATES

Weblearning makes it easy for you to offer certificates for your courses and quizzes. You have complete control over the content and layout of certificates, as well as if and when they become available to your learners.



COURSE INVITATIONS

Weblearning contains a comprehensive email invitation system. Sending and tracking course invites are a snap. Its also easy to send invitations to newly enrolled users without resending to those already invited.



USER MANAGEMENT

Weblearning makes it easy to manage large numbers of learners. A comprehensive search mechanism, combined with the ability to assign learners into groups makes it easy to manage, enroll and edit multiple users at once.



ADMIN & PROCTOR MANAGEMENT

Weblearning makes it easy to manage sub-admins and proctors. Create sub-admins for specific areas of your account, and designate proctors to enroll learners into courses using course proctor codes.



INTEGRATES WITH OTHER SYSTEMS

Weblearning comes with a comprehensive API (Application Programming Interface), making it possible to integrate into your existing systems like shopping carts, CRMs, or just about any other system imaginable.



EXPANDABLE & SCALABLE

Weblearning uses a unique, scalable plug-in architecture, meaning you can both purchase off-the-shelf as well as create your own plug-in apps. So Weblearning scales without having to 'customize' core system files.



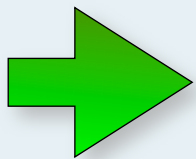
A FOCUS ON BUILT-IN CONTENT AUTHORING

Weblearning is designed to enable you to both manage your online learning, as well as create online learning. Built into the system are very powerful and easy-to-use authoring components that enable you to create interactive practice quizzes, graded quizzes, and learning exercises/ learning presentations. Unlike most other LMS systems on the market, for most

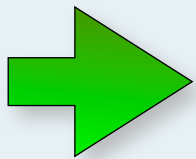
uses, Weblearning has everything you need to both create and manage all of your online learning courses (although you can certainly use your favorite authoring platform as well and host that content inside Weblearning).

See the chart below for a breakdown of some of the more popular features included in the authoring components.

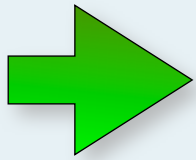
AUTHORING HIGHLIGHTS



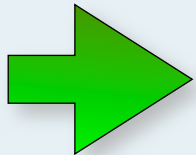
Variety of question and slide types including multiple-choice, true-false, short-answer, matching, essay, and more.



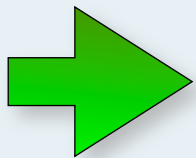
Complete control over layout and design of each question and slide using a Microsoft-Word like interface so it will feel familiar. Its easy to include images, videos, audio, text and more in your slides and questions



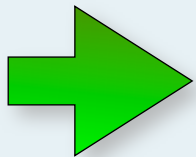
Prevent cheating on quizzes with randomization, question shuffling, answer-order shuffling, and quiz variations. Combine with question-pooling and selection rules enabling you to build the exact quiz you need - all via a slick drag-and-drop builder interface.



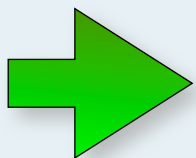
Full control over the feedback contents and layout. Control what your users see, and how it looks when they complete a learning exercise or pass or fail a quiz. You can even apply advanced Intellectual Property Protection to prevent copy/paste of your content.



Built-in auto-save mechanism prevents data loss during power outages. In addition, you can enable pause/resume functionality for each quiz and learning exercises.



Learning Exercises can contain instant-feedback questions, which can be combined with informational slides to create a show-then-quiz interactive exercises for your learners.



Optional plug-in apps enable additional functionality such as mark-and-review questions, import-from-powerpoint, slidepoint (like powerpoint but online), study-mode quizzes, flashcard quizzes, and more.



SYSTEM REQUIREMENTS

IF YOU ARE PLANNING TO PURCHASE A LICENSE YOU CAN USE ON YOUR OWN SERVERS (AS OPPOSED TO A HOSTED PLAN), YOUR SERVER WILL NEED TO MEET THE FOLLOWING SPECS:

Operating System	Linux, Unix, Windows Server
Web Server	Apache
Server Programming Language	PHP 5.2+ with Zend Encoder, GDI+
Database	MySQL 4.1.2+ (5.0+ recommended)
Processor	1Ghz or better
RAM	Linux/Unix: 1GB, Windows: 2GB
Disk Space	25MB for Installation

The Weblearning LMS is available as a **hosted service** (*on an monthly or annual basis*), or as a license you can purchase and install on your own server.

ABOUT ATRIXWARE

Established in 1997, Atrixware is a customer-focused, globally recognized E-Learning Solutions company with hundreds of customers across corporate, education, and government sectors. Our product & services portfolio ranges from Learning systems and authoring software, to custom E-Learning systems and content design.

Phone: 1.866.696.8709

Web: <http://weblearning.atrixware.com/>

141 S. Black Horse Pike Suite #9, Blackwood, NJ 08012

